




Dynamic ensemble models to predict distributions and anthropogenic risk exposure for highly mobile species

Briana Abrahms¹  | Heather Welch^{1,2} | Stephanie Brodie^{1,2} | Michael G. Jacox^{1,3} | Elizabeth A. Becker^{2,4} | Steven J. Bograd^{1,2} | Ladd M. Irvine⁵  | Daniel M. Palacios⁵  | Bruce R. Mate⁵ | Elliott L. Hazen^{1,2}

¹Environmental Research Division, NOAA Southwest Fisheries Science Center, Monterey, California

²Institute of Marine Science, University of California Santa Cruz, Santa Cruz, California

³Physical Sciences Division, NOAA Earth System Research Laboratory, Boulder, Colorado

⁴Marine Mammal and Turtle Division, NOAA Southwest Fisheries Science Center, La Jolla, California

⁵Marine Mammal Institute and Department of Fisheries and Wildlife, Oregon State University, Newport, Oregon

Correspondence

Briana Abrahms, Environmental Research Division, NOAA Southwest Fisheries Science Center, 99 Pacific St. Suite 255A, Monterey, CA 93940.

Email: briana.abrahms@noaa.gov

Funding information

Alfred P Sloan Foundation; Gordon and Betty Moore Foundation; Office of Naval Research, Grant/Award Number: 0310862 and 9610608; National Aeronautics and Space Administration, Grant/Award Number: NNX11AP71G; David and Lucile Packard Foundation; Benioff Ocean Initiative

Editor: Maria Beger

Abstract

Aim: Advances in ecological and environmental modelling offer new opportunities for estimating dynamic habitat suitability for highly mobile species and supporting management strategies at relevant spatiotemporal scales. We used an ensemble modelling approach to predict daily, year-round habitat suitability for a migratory species, the blue whale (*Balaenoptera musculus*), and demonstrate an application for evaluating the spatiotemporal dynamics of their exposure to ship strike risk.

Location: The California Current Ecosystem (CCE) and the Southern California Bight (SCB), USA.

Methods: We integrated a long-term (1994–2008) satellite tracking dataset on 104 blue whales with data-assimilative ocean model output to assess year-round habitat suitability. We evaluated the relative utility of ensembling multiple model types compared to using single models, and selected and validated candidate models using multiple cross-validation metrics and independent observer data. We quantified the spatial and temporal distribution of exposure to ship strike risk within shipping lanes in the SCB.

Results: Multi-model ensembles outperformed single-model approaches. The final ensemble model had high predictive skill (AUC = 0.95), resulting in daily, year-round predictions of blue whale habitat suitability in the CCE that accurately captured migratory behaviour. Risk exposure in shipping lanes was highly variable within and among years as a function of environmental conditions (e.g., marine heatwave).

Main conclusions: Daily information on three-dimensional oceanic habitats was used to model the daily distribution of a highly migratory species with high predictive power and indicated that management strategies could benefit by incorporating dynamic environmental information. This approach is readily transferable to other species. Dynamic, high-resolution species distribution models are valuable tools for assessing risk exposure and targeting management needs.

KEYWORDS

animal movement, anthropogenic risk, dynamic ocean management, ensemble modelling, habitat selection, marine megafauna, migration, satellite telemetry, spatial ecology, species distribution model

1 | INTRODUCTION

The ocean provides a diverse and extensive suite of ecosystem services, all of which ultimately depend on a functioning ecosystem. Management strategies that enable human activity while conserving biodiversity remains a key challenge for ocean governance. Marine spatial planning implicitly addresses such trade-offs and as such has become a valuable approach for regulating multiple ocean activities while achieving conservation targets (Foley et al., 2010; White, Halpern, & Kappel, 2012). However, marine spatial planning is often static, despite recognition that marine habitats tend to be highly dynamic and can shift in space on timescales of days to weeks (Checkley & Barth, 2009; Kavanaugh et al., 2016). Thus, static management strategies do not account for shifting habitats or human activities and, importantly, offer only partial protection for highly mobile species (Dunn, Maxwell, Boustany, & Halpin, 2016; Hazen et al., 2018). Dynamic management has been identified as a potential solution to this problem by allowing management decisions to be updated in space and time in response to changing environmental or socioeconomic conditions (Lewison et al., 2015; Maxwell et al., 2015). In order to inform the ecological components of dynamic management, there is first a need to accurately describe the spatiotemporal distribution of species and populations (Foley et al., 2010).

Species distribution models (SDMs) are key tools for describing species habitats and distributions across marine and terrestrial systems (Elith & Leathwick, 2009; Robinson, Nelson, Costello, Sutherland, & Lundquist, 2017). Species distribution modelling involves using statistical tools to relate species occurrence or abundance to spatiotemporal patterns of environmental variation (Elith & Leathwick, 2009). Though the designs, uses and applications of SDMs in ecology are diverse, two methodological advancements hold particular promise for dynamic ocean management.

First, while marine SDMs have typically used a single-model type (Robinson et al., 2017), determining an appropriate modelling approach can be challenging given inherent trade-offs in the statistical methods available (Elith et al., 2006; Qiao, Soberón, & Peterson, 2015). Multi-model ensembles can reduce uncertainty by overcoming biases inherent in any one model type and providing a “consensus” approach to predictions (Araújo & New, 2007; Gritti, Duputié, Massol, & Chuine, 2013). Predictions generated from multi-model ensembles can also be more accurate than those of single models (Marmion, Parviainen, Luoto, Heikkinen, & Thuiller, 2009; Oppel et al., 2012; Scales et al., 2015). As a result, ensemble model approaches are increasingly recommended for marine species distribution modelling (Jones & Cheung, 2014; Robinson et al., 2017), motivating further evaluation of their application to dynamic management.

Second, data-assimilative ocean circulation models offer the opportunity to better match species data to the underlying environmental processes at relevant spatiotemporal scales (Becker et al., 2016; Brodie et al., 2018). There has been increasing attention paid in the marine realm to the spatiotemporal scales of environmental observations and their relevance to the scales of animal response (Mannocci et al., 2017; Scales et al., 2016). Frequently, there is a mismatch between the spatiotemporal resolution of species occurrence and the spatiotemporal resolution of environmental observations. Such mismatch can lead to incorrect inferences and increased uncertainty (Scales et al., 2016). Moreover, designing dynamic management strategies for highly mobile species often relies on up-to-date, or “real-time,” estimates of species distributions (Laist, Knowlton, & Pendleton, 2014). Data-assimilative ocean circulation models can help solve this mismatch by providing gapless environmental data, often with higher spatial or temporal resolutions than those of processed remotely sensed data (Becker et al., 2016; Brodie et al., 2018). Ocean circulation models can also provide information about the vertical structure of the ocean that remotely sensed variables cannot, which can improve predictions of marine species’ distributions (Brodie et al., 2018).

Blue whales (*Baleoptera musculus*) are both a highly migratory species and a species of conservation concern, highlighting the need to understand their habitat use and exposure to potential anthropogenic threats throughout their migrations. Blue whales are listed as Endangered under both the U.S. Endangered Species Act (1973) and the IUCN Red List of Threatened Species due to population depletion from commercial whaling (Reilly et al. 2008). In the Northeast Pacific, blue whales perform latitudinal migrations between tropical wintering/breeding grounds and productive foraging grounds at higher latitudes in the California Current Ecosystem (CCE) (Bailey et al., 2009; Ballance, Pitman & Fiedler, 2006; Irvine et al., 2014; Mate, Lagerquist, & Calambokidis, 1999). While in the CCE, blue whales follow the spring and summertime progression of the availability of krill (Abrahms et al., 2019), their primary prey, and demonstrate temporal synchrony with krill availability (Croll et al. 2005; Fossette et al. 2017). While dynamic distribution data on krill are not available at the requisite spatial and temporal scales of our study, previous studies have shown that blue whale habitat in the CCE can be characterized by a combination of dynamic and static environmental characteristics, such as sea surface temperature, thermocline and seafloor depths and primary productivity (Becker et al., 2016; Hazen et al., 2017).

Though the eastern North Pacific blue whale population is recovering (Monnahan, Branch, & Punt, 2014), mortality from ship strikes in the CCE remains a major management concern (Rockwood,

Calambokidis, & Jahncke, 2017). In particular, the Southern California Bight (SCB; from San Diego to Point Conception, ~33–34.5°N) is a hotspot for ship strikes due to the high spatial and temporal overlap between blue whale summer foraging hotspots and shipping vessels travelling to and from southern California's largest ports (Hazen et al., 2017; Redfern et al., 2013; Rockwood et al., 2017). Currently, voluntary seasonal slowdowns are the only tool used to manage ship strike risk in this region (Rockwood et al., 2017). The existence of multiple shipping lanes for marine traffic offers potential opportunity for redirecting vessels based on strike risk (Redfern et al., 2013), but existing blue whale models for the region are either limited by partial temporal coverage (Becker et al., 2018) or by coarse resolution (Hazen et al., 2017). In addition to better matching the timescales of species occurrences, finer scale distribution estimates may be better able to inform dynamic management decisions in the SCB given the migratory behaviour of blue whales (Bailey et al., 2009) and the variable biophysical conditions in the CCE (Checkley & Barth, 2009).

We used a multi-year (1994–2008) satellite tracking dataset on 104 blue whales along with data-assimilative ocean model output to develop a daily, year-round distribution model for blue whales in the CCE. We evaluated the utility of using multi-model ensembles relative to single-model approaches and used the largest compilation of independent blue whale sightings datasets to date to select and validate our final species distribution model. Finally, we quantified the spatial and temporal distribution of exposure to ship strike risk within shipping lanes in the SCB.

2 | METHODS

2.1 | Movement data

Argos-linked satellite tags were deployed between 1994 and 2008 on 104 blue whales off of the Costa Rica Dome ($N = 2$), the Gulf of California ($N = 3$), the Santa Barbara Channel ($N = 66$) and northern California coast ($N = 33$) (Bailey et al., 2009; Hazen et al., 2017; Irvine et al., 2014). Duration of tracks averaged 101 ± 85 days (mean \pm SD). All tracks were filtered for errors and smoothed to provide daily position estimates using a Bayesian switching state-space model (Bailey et al., 2009; Jonsen, Flemming, & Myers, 2005), resulting in 10,603 daily locations (Figure S1). Information on tag types and deployment duration is available in Bailey et al. (2009).

Because presence-absence models outperform presence-only models for species distribution modelling (Elith et al., 2006), use of artificial absence data (i.e., “pseudo-absences”) is recommended when true absence data are unavailable (Barbet-Massin, Jiguet, Albert, & Thuiller, 2012). To analyse habitat suitability in a presence-absence framework, we generated pseudo-absences following Hazen et al. (2017) by simulating 200 correlated random walks per whale track using empirical step-length and turn-angle distributions (Kareiva & Shigesada, 1983). This approach enabled matching the error structures of pseudo-absences and empirical movement data (Hazen et al., 2017; Jonsen et al., 2005; Scales et al., 2016; Willis-Norton et al., 2015). A flag value was assigned to each simulated

track indicating its similarity to the empirical track based on distance and net angular displacement from the empirical track (Hazen et al., 2017; Willis-Norton et al., 2015). To ensure simulated tracks represented areas accessible to the whales, only simulated tracks in the upper 75th percentile of flag values were used for comparison (see Hazen et al., 2017 for detail). Two simulated tracks per empirical track were selected at random for inclusion in further analyses, resulting in 21,328 pseudo-absence points compared to 10,603 presences (Barbet-Massin et al., 2012; Figure S2).

2.2 | Environmental data

Presence and pseudo-absence data were matched to dynamic surface and subsurface environmental variables as well as to static sea-floor relief variables. Variables were examined based on hypothesized drivers of habitat and those shown to be significantly associated with blue whale space use (Becker et al., 2016, 2018; Hazen et al., 2017). Daily environmental data at 0.1° resolution were sourced from historical and near-real-time data-assimilative versions of the Regional Ocean Modelling System (ROMS) configured for the CCE (Moore et al., 2013; Neveu et al., 2016) (obtained from oceanmodeling.ucsc.edu). Dynamic surface variables examined were sea surface temperature (SST), SST standard deviation (SST_sd), sea surface height (SSH), SSH standard deviation (SSH_sd), eddy kinetic energy (EKE) and wind stress curl. Dynamic subsurface variables were isothermal layer depth (ILD), similar to mixed layer depth and defined by a 0.5°C deviation from the SST, and bulk Brunt Väisälä frequency (BVF), a measure of stratification averaged over the upper 200 m of the water column. In addition, the following static seafloor relief variables were sourced from ETOPO1 (obtained from <https://www.ngdc.noaa.gov/mgg/global/global.html>; 0.1-degree resolution): bathymetry (z), standard deviation of bathymetry (z_sd), slope and aspect. Standard deviations of SST, SSH and bathymetry for each location were calculated using a 1° radius centred on that location. Our study area was matched to the ROMS model domain (30 to 48°N and from the coast to 134°W).

2.3 | Species distribution modelling

Given potential differences in explanatory power and predictive skill (Derville, Torres, Iovan, & Garrigue, 2018; Fiedler et al., 2018), species distribution models were built using both Generalized Additive Mixed Models (GAMMs; “mgcv” R package) (Wood, 2017) and Boosted Regression Trees (BRTs; “dismo” R package) (Elith, Leathwick, & Hastie, 2008). Because seasonality in migratory behaviour has been shown to influence blue whale environmental preferences (Hazen et al., 2017), for both GAMMs and BRTs we explored year-round models as well as separate models for each migratory season (summer/fall–July–November; winter/spring–December–June). GAMMs were fitted using the binomial family and a logit link function, with individuals nested as a random effect. A tensor product smooth between latitude and longitude was explored as predictors in GAMMs to account for spatial autocorrelation (Becker et al., 2018). A latitudinal interaction term with SST was also considered in the GAMMs to account for the latitudinal temperature

gradient over the study area (Becker et al., 2018). Multiple candidate GAMM models were generated based on published and hypothesized predictor variable combinations (Becker et al., 2016; Hazen et al., 2017) and were initially evaluated using the Area Under the receiver operating Curve (AUC; Table S1) before selecting the top three GAMMs for further model evaluation. AUC statistics discriminate between true-positive and false-positive rates, and range from 0 to 1, where a score of >0.5 indicates better than random discrimination (Hanley & McNeil, 1982). Generalized variance inflation factors were used to ensure any colinear predictor variables were not included in the same GAMM. As such, SST and BVF were not included together in candidate GAMMs. A Bernoulli family distribution was used for BRTs, in which all environmental variables were included since BRTs can handle irrelevant predictors and any collinearity effects (Elith et al., 2008). GAMM-BRT ensemble model combinations were explored by ensembling the seasonal BRTs with each of the top three performing seasonal GAMMs. Each model type was given an equal weighting in the ensembles.

Because of the importance of using multiple metrics for SDM evaluation (Fourcade, Besnard, & Secondi, 2017), predictive performance for the BRTs, top three GAMMs, and ensemble model combinations was further evaluated using AUC and True Skill Statistic (TSS) metrics on three training and testing dataset combinations: (a) k-fold cross-validation with a 75%/25% training/testing data split over each of five folds, (b) "Leave One Out" cross-validation in which a year of data was iteratively left out from training and retained for testing and (c) the full tagging dataset tested on an independent blue whale sightings dataset ($N = 3,413$ observations; SI Table S3, Figures S3 and S4). To calculate AUC and TSS metrics for testing against sightings data, pseudo-absences were randomly generated at a 1:3 presence:absence ratio. As independent testing is recommended over cross-validation for evaluating SDM performance (Derville et al., 2018; Gregor, Palacios, Thompson, & Chan, 2018), the final model was chosen based on the sightings data metric averaged across seasons. Finally, we calculated the point biserial correlation between the final model's predictions and independent sightings versus pseudo-absences (Elith et al., 2006). Daily spatial predictions of blue whale habitat suitability were mapped onto the 0.1° gridded study domain using the "raster" R package.

TABLE 1 Top seasonal GAMM, BRT and ensemble candidate models and diagnostic metrics (AUC/TSS) compared to independent sightings data for each season and averaged across seasons. Metrics for additional training/testing methods are provided in Table S1. Variable acronyms refer to sea surface temperature (SST), bathymetry (z), sea surface height (SSH), SSH standard deviation (SSH_sd), bathymetry standard deviation (z_sd), isothermal layer depth (ILD), bulk Brunt Väisälä frequency (BVF), and eddy kinetic energy (EKE). All GAMMs include a random effect for individual. The final model is highlighted in bold

Model name	Model description	Winter/spring	Summer/fall	Seas. Avg.
GAMM 1	SST + SSH_sd + z + z_sd + ILD + EKE	0.974/0.846	0.908/0.755	0.941/0.801
GAMM 2	SST + SSH_sd + z + z_sd + ILD + EKE + lat*lon	0.914/0.724	0.892/0.727	0.903/0.706
GAMM 3	SST*lat + SSH_sd + z + z_sd + ILD + EKE	0.945/0.777	0.896/0.722	0.921/0.750
BRT	SST + SST_sd + SSH + SSH_sd + z + z_sd + ILD + EKE + curl + BVF + slope + aspect	0.983/0.880	0.903/0.704	0.943/0.792
Ensemble 1	GAMM 1 + BRT	0.985/0.875	0.913/0.732	0.949/0.804
Ensemble 2	GAMM 2 + BRT	0.972/0.852	0.910/0.722	0.941/0.787
Ensemble 3	GAMM 3 + BRT	0.978/0.854	0.906/0.725	0.941/0.790

2.4 | Risk exposure in shipping lanes

Based on the output of the top-performing model or ensemble, we compared predicted habitat suitability within shipping lanes inside and outside of the Santa Barbara Channel in the SCB over the course of a year to evaluate spatiotemporal patterns in risk exposure to ship strikes. Vessels travelling into the SCB use either established routes inside the Santa Barbara Channel ("Northern approach") or a Western approach outside of the channel, following the implementation of an "Ocean-Going Vessel Fuel Rule" in 2009 that resulted in increased traffic using the Western approach (Redfern et al., 2013). Spatial layers for the alternate routes were provided by the Channel Islands National Marine Sanctuary. The average of predicted habitat suitability in all grid cells intersecting each lane was calculated for each day of the year in 2009 and 2015 to compare a year with average environmental conditions (2009) to a year in which a climatic anomaly occurred associated with a prolonged marine heatwave (2015) (Bond, Cronin, Freeland, & Mantua, 2015; Di Lorenzo & Mantua, 2016; Jacox et al., 2018, 2016).

All analyses were performed using R statistical computing (R Core Team, 2017).

3 | RESULTS

3.1 | Species distribution model

Dynamic ensemble modelling for blue whales revealed that blue whale habitat use in the CCE is strongly influenced by temperature, seafloor topography and subsurface water properties (Table 1, Figures 1 and 2). Seasonal models outperformed year-round models on average for both GAMMs and BRTs (Table S2), and top models showed high predictive performance, with AUC scores using tracking and independent sightings datasets ranging from 0.84 to 0.99, and TSS scores ranging from 0.55 to 0.89 (Tables 1 and S1). The highest performing GAMM included SST, SSH_sd, z, z_sd, ILD and EKE (Table 1, Figure 1). The average explained deviance, a measure of descriptive performance, for the seasonal GAMMs was 43.4%. BRTs did not undergo variable selection and included all environmental

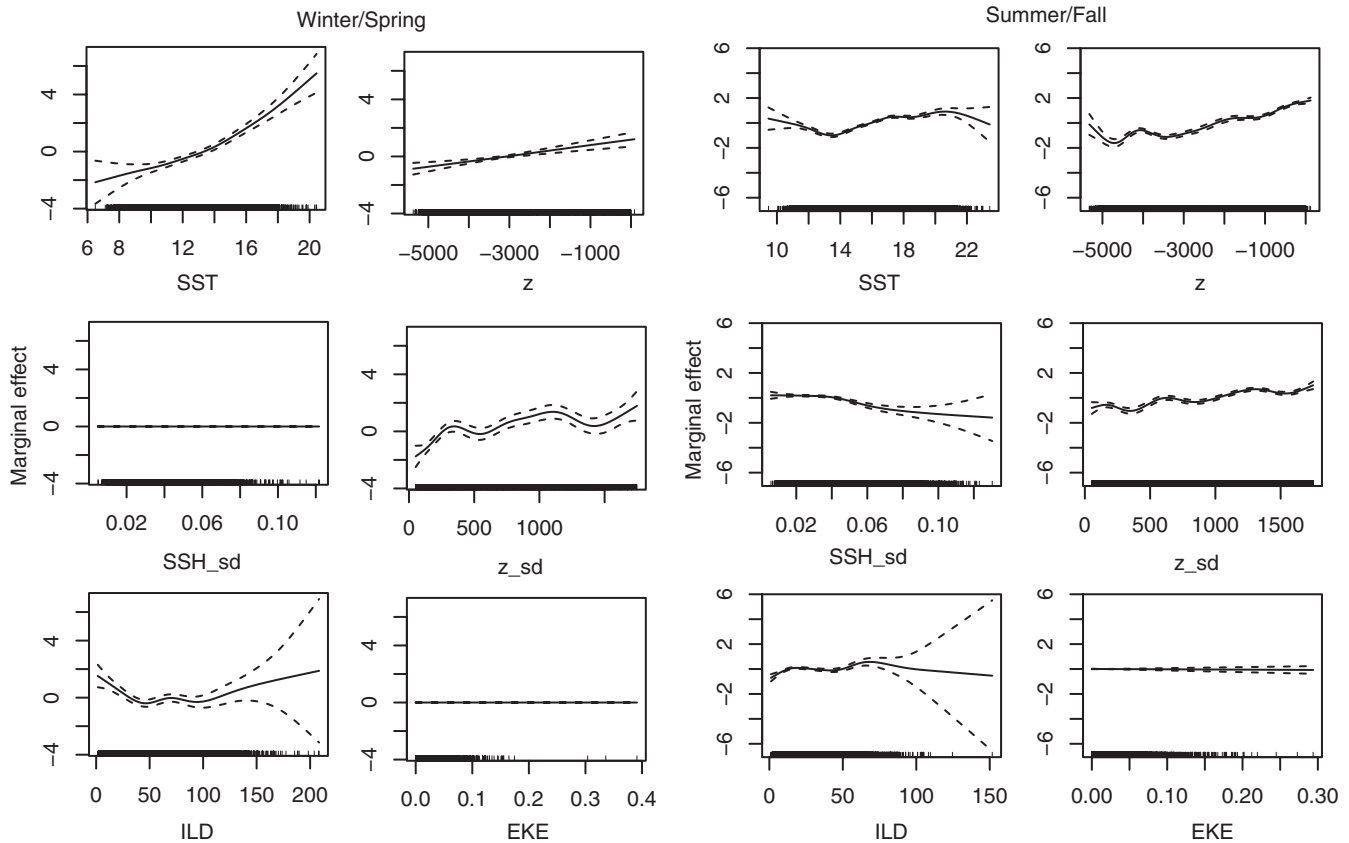


FIGURE 1 Response curves of the final seasonal presence-availability Generalized Additive Mixed Models in winter/spring (December–June) and summer/fall (July–November). Variable acronyms refer to sea surface temperature (SST), bathymetry (z), sea surface height standard deviation (SSH_sd), bathymetry standard deviation (z_sd), isothermal layer depth (ILD) and eddy kinetic energy (EKE). Dashed lines indicate 95% confidence intervals. Tick marks on the x-axis indicate all presence and pseudo-absence data

covariates, though SST, SSH_sd, z , z_sd and ILD contributed the highest explained deviance (Table 1, Figure 2, Figures S5 and S6). The average explained deviance for the seasonal BRTs was 60.1%.

GAMMs and BRTs showed general agreement in habitat preferences. For both model types, some differences in response curves between seasons were apparent: in winter/spring, habitat suitability was associated with SST >15°C, high SST standard deviations indicating thermal front activity, shallower ILDs (<50 m), low BVFs indicating weak stratification, seafloor depths <3,000 m, and areas of high seafloor ruggedness as measured by standard deviation of bathymetry (Figures 1 and 2, Figure S5). In summer/fall, habitat suitability was associated with SST between 16 and 20°C, weak stratification, shallower seafloor depths (<2,000 m), high seafloor ruggedness and high wind stress curl (Figures 1 and 2, Figure S6). In addition, sea surface height standard deviation (SSH_sd), a measure of mesoscale variability, was a significant contributor to the models in summer/fall, but not in winter/spring (Figures 1 and 2). Multi-model ensembles outperformed single models (Table 1). Based on AUC and TSS metrics using the independent sightings dataset, the final model used for spatial predictions of habitat suitability was an ensemble between the seasonal BRTs and highest performing seasonal GAMMs. Point biserial correlation confirmed a significant association with higher habitat suitability values for sightings versus pseudo-absences (Pearson's correlation coefficient = 0.547, p -value <0.001; Elith et al., 2006).

The spatial dynamics of the whales' latitudinal migratory behaviour were evident in the predictions and matched patterns previously described in the literature (Bailey et al., 2009; Burtenshaw et al., 2004; Irvine et al., 2014; Mate et al., 1999). Blue whale habitat suitability in the CCE generally remained low January–April and began increasing in the SCB by May and June. Habitat suitability continued to increase northward through late summer and early fall, reflecting the whales' northward progression as more northerly habitats became productive in accordance with the seasonal upwelling cycle (Bograd et al., 2009). By November, habitat suitability contracted southward into the SCB and remained low through winter, in concordance with whales returning to tropical breeding grounds. Consistent with previous studies (Bailey et al., 2009; Hazen et al., 2017; Irvine et al., 2014), hotspots of habitat suitability within the CCE were observed in the SCB, Monterey Bay (~37°N), Gulf of the Farallones (~38°N), and in the vicinity of Cape Mendocino (~40°N) and Cape Blanco (~43°N) (Figure 3). Spatial predictions for 2016 during the spring and summertime upwelling season/period of intensive blue whale foraging in the California Current (May–September) are presented in Figure 3. Daily spatial predictions for the years 2009, 2015 and 2016 can be viewed interactively and downloaded via RShiny (S7).

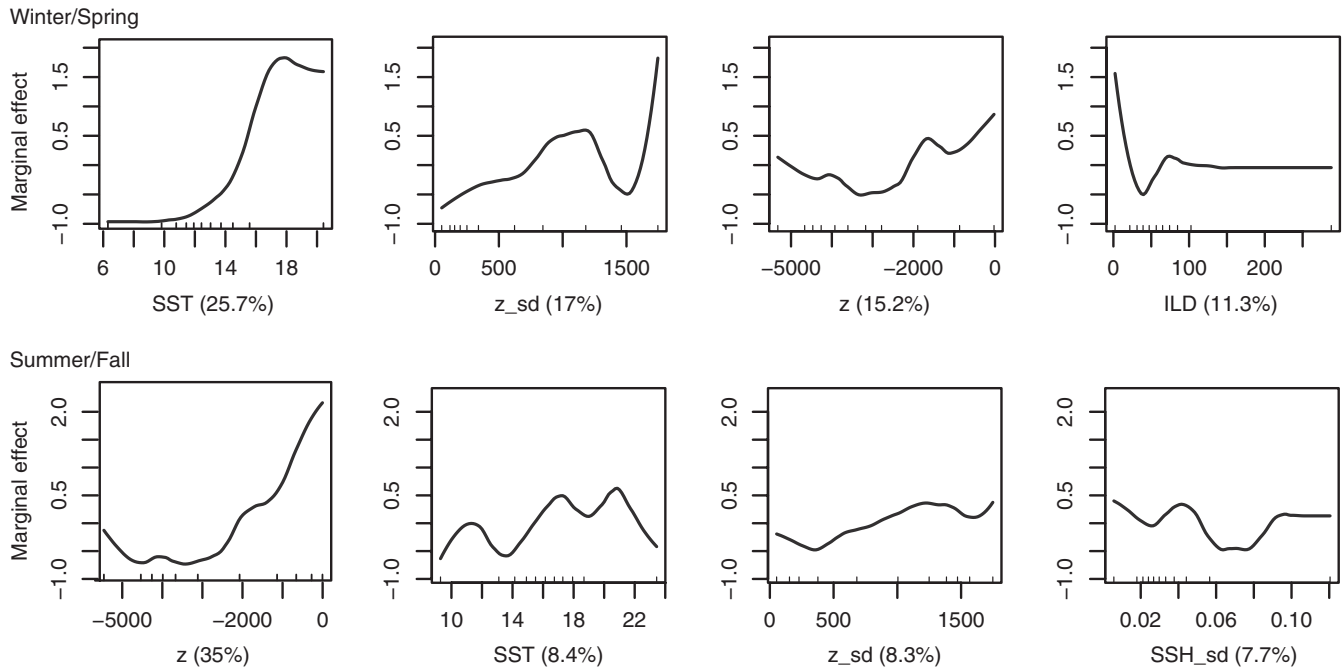


FIGURE 2 Smoothed response curves of the top four contributing predictor variables in seasonal presence-availability Boosted Regression Trees. Variable acronyms refer to sea surface temperature (SST), bathymetry standard deviation (z_{sd}), bathymetry (z), isothermal layer depth (ILD) and sea surface height standard deviation (SSH_sd). Percentages reflect the percentage contribution of each variable to explained deviance. Tick marks on the x-axis indicate the ten quantiles of presence and pseudo-absence data

3.2 | Seasonal timing of risk exposure in shipping lanes

Predicted whale habitat suitability in the shipping lanes varied substantially within and between years as a function of environmental conditions (Figures 4 and 5, Figure S8). Habitat suitability within the shipping lanes in 2009 matched the expected pattern of whale migratory behaviour as well as the observer sightings data, with very low habitat suitability December–April and a sustained period of high suitability June–October (Figure 5). In contrast, the same analysis during the Northeast Pacific marine heatwave of 2015 showed high periods of suitability distributed throughout the annual cycle, which were similarly concordant with the sightings data (Figure 5).

4 | DISCUSSION

Dynamic management approaches, in which management strategies are adjusted in concert with relevant biological, environmental and socioeconomic processes, are increasingly proposed to balance the trade-offs between human activities and species conservation (Lewison et al., 2015; Maxwell et al., 2015). Because dynamic management strategies often rely on an understanding of how the spatial distribution of a species or population changes with time (Howell, Kobayashi, Parker, Balazs, & Polovina, 2008; Maxwell et al., 2015), dynamic SDMs are emerging as an important natural resource management tool (Hazen et al., 2018). Dynamic SDMs can not only elucidate a species' habitat preferences and distribution in relation to shifting environmental

conditions, but they can also help identify the spatial and temporal dynamics of species' risk exposure (Zydelis et al., 2011). Our study highlights the utility of dynamic ensemble modelling using high-resolution environmental data to identify time-varying species distributions and guide dynamic management of a highly migratory species.

4.1 | Model performance

Based on a suite of testing metrics, including validation against an extensive compilation of independent sightings data, our final seasonal model yielded accurate year-round predictions of daily blue whale habitat suitability in the CCE and realistically reproduced the whales' expected latitudinal migratory behaviour. The top GAMM and BRT models showed strong descriptive and predictive performance, and an ensemble of the two models increased overall performance (Table 1). A previous blue whale model relating the same satellite tracking dataset to monthly remotely sensed variables obtained a full dataset AUC score of 0.86 (Hazen et al., 2017); the present model represents a substantial improvement in predictive performance based on that metric (Full AUC = 0.95), as well as compared to independent observations (Sightings AUC = 0.95). In addition, the use of year-round satellite tracking data spanning over ten years with daily ocean-modelled environmental variables enabled predictions of blue whale habitat suitability with unprecedented temporal coverage and resolution in the CCE, representing a significant step towards finer scale dynamic management applications.

Though our satellite tracking dataset ended in 2008, comparison with independent sightings data through 2017 suggested that the

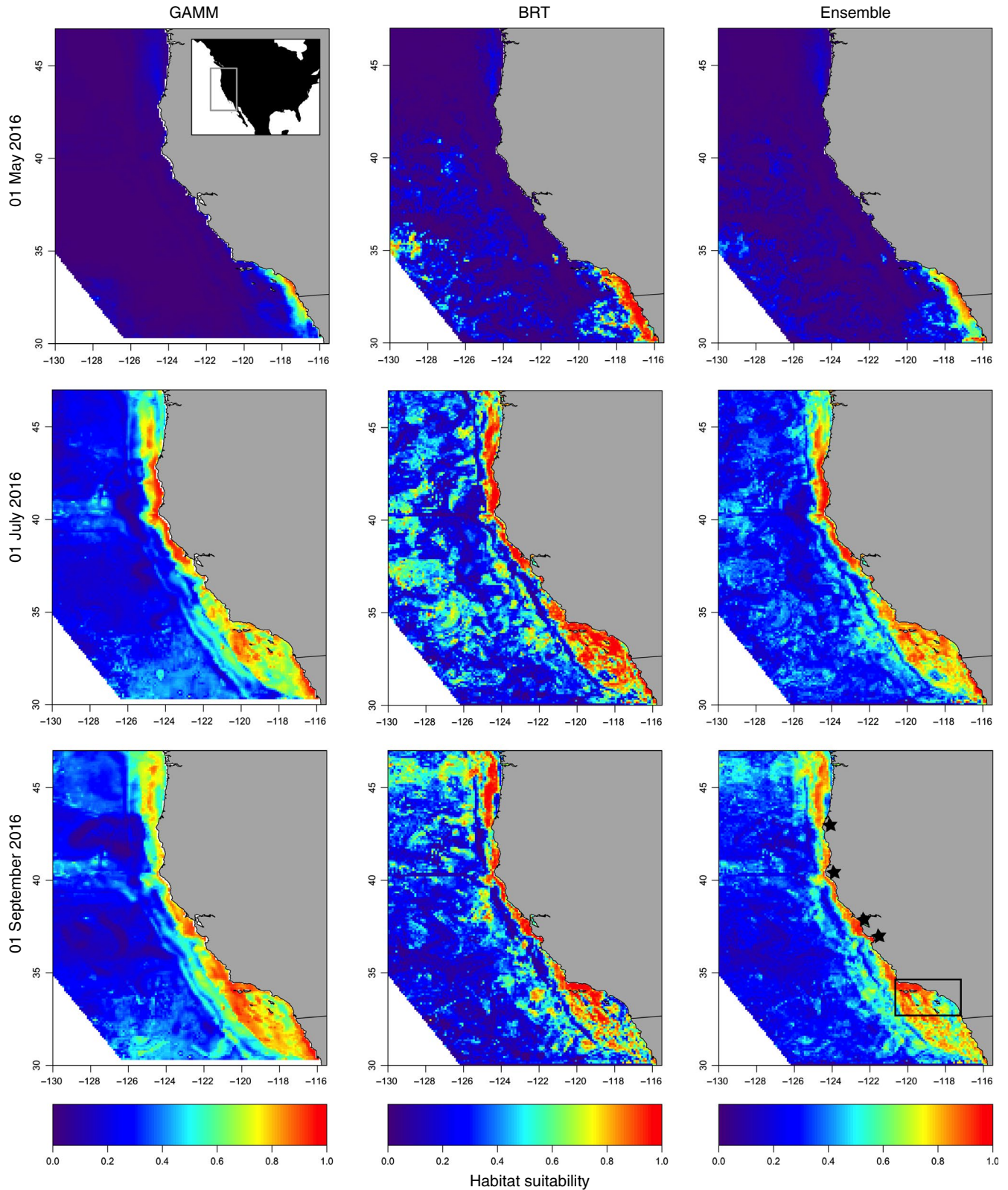


FIGURE 3 Comparison of spatial predictions at 0.1-degree resolution of blue whale habitat suitability (range 0–1) in the California Current from the top-performing GAMM, BRT and ensemble models for the first day of the month in May, July and September 2016. Bottom right panel shows points of interest, from north to south: Cape Blanco, Cape Mendocino, Gulf of the Farallones, Monterey Bay (stars) and Southern California Bight (box)

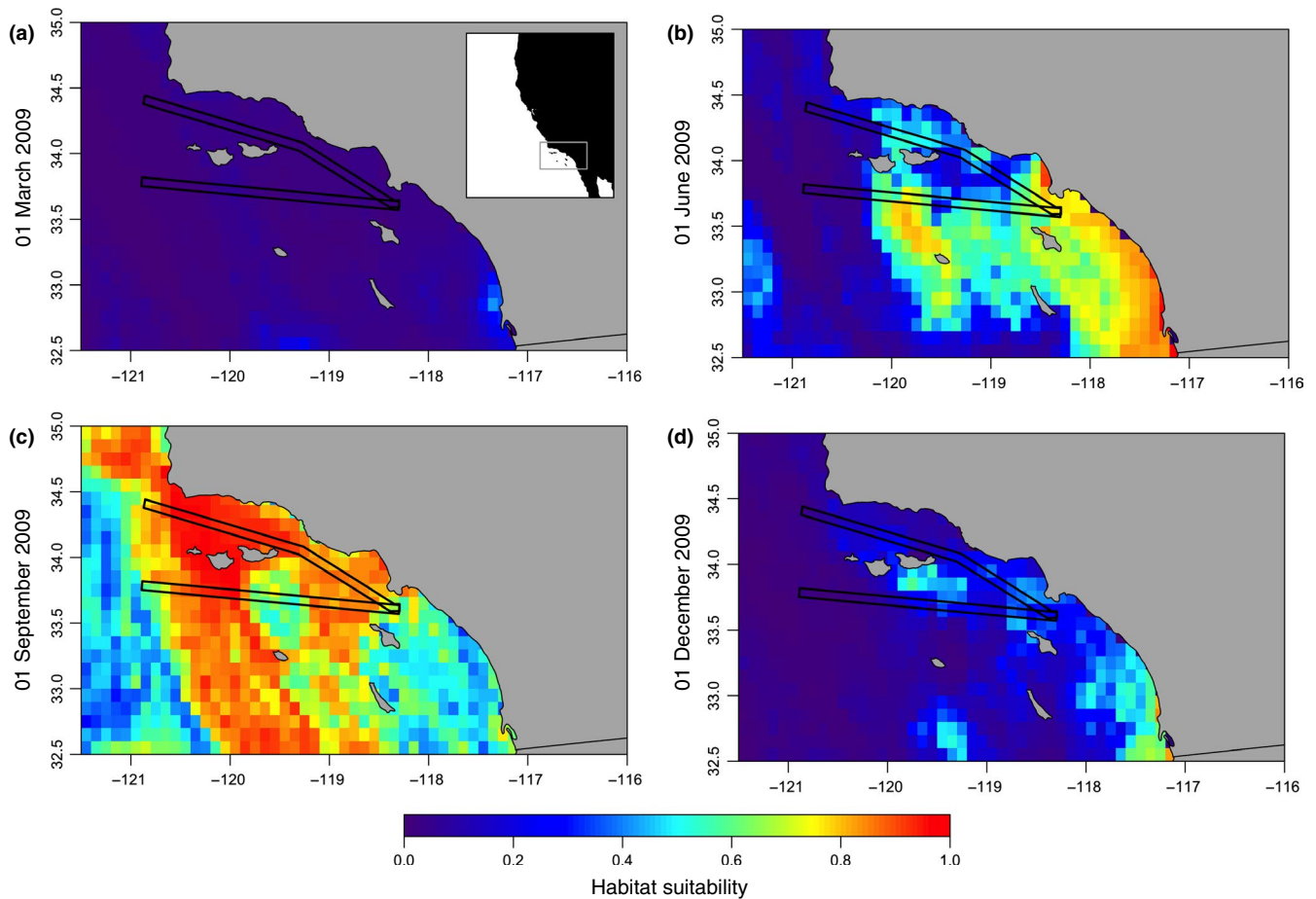


FIGURE 4 Spatial predictions of blue whale habitat suitability in the Southern California Bight overlaid with shipping lanes inside the Santa Barbara Channel (Northern approach) and outside the Channel (Western approach) in (a) March, (b) June, (c) September and (d) December of 2009

extrapolative performance of our model into novel years and conditions is credible. Additional observations could be used to further evaluate extrapolative performance and monitor any changes in whale behaviour or environmental preferences as conditions in the CCE continue to change (Di Lorenzo, Miller, Schneider, & McWilliams, 2005; Di Lorenzo & Ohman, 2013). New data sources such as acoustic monitoring arrays (Širovic et al., 2015) could be integrated into both model building and validation. Blue whale locations collected from satellite tag data showed highest blue whale densities near the coast (Figure S1), which may be due in part to nearshore tagging locations (Bailey et al., 2009). Telemetry-based models may therefore underestimate offshore habitat suitability, though model performance remained high when compared to sightings data that were more broadly distributed offshore (Figure S3). Testing the performance of models developed using a combination of data types such as telemetry, transect survey and acoustic monitoring data would therefore be a valuable exercise for exploring biases based on data types used (Fithian, Elith, Hastie, & Keith, 2014; Yamamoto et al., 2015).

Our model evaluation procedure also highlights the value of using multi-model ensembles. Though top-performing GAMMs and BRTs yielded similarly high diagnostic scores (Table 1), fine-scale differences were evident in the spatial predictions (Figure 3). Different modelling

approaches have various strengths and weaknesses, and in particular display trade-offs between the ability to explain fitted data versus predict novel data (i.e., descriptive versus predictive performance, respectively) (Derville et al., 2018). For instance, machine learning techniques like BRTs typically have strong descriptive power but can suffer from overfitting (Derville et al., 2018). Indeed, the unsmoothed response curves from our BRT models (Figures S5 and S6) show abrupt changes typical of the recursive binary splits of regression trees (Elith et al., 2008). Such abruptness in response curves can indicate overfitting, though the performance of these models tested against novel sightings data suggests this is not the case. In contrast to machine learning models, regression models like GAMMs may have lower descriptive performance but have been shown to have good predictive performance (Derville et al., 2018; Gregor et al., 2018; Qiao et al., 2015). GAMMs have also been proposed as effective tools for predicting into novel conditions (Becker et al., 2018; Derville et al., 2018). Ensemble models therefore provide an approach for balancing these trade-offs and can highlight areas of consensus between models (Araújo & New, 2007; Gritti et al., 2013; Marmion et al., 2009; Scales et al., 2015). In order to be relevant to management applications, our interest here was primarily in predictive rather than descriptive performance, and indeed, we demonstrate that a multi-model ensemble yielded higher predictive

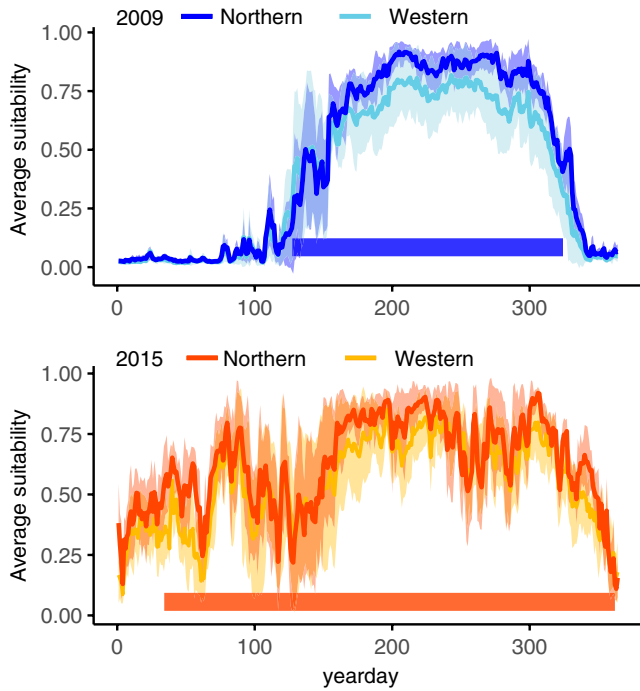


FIGURE 5 Predicted blue whale habitat suitability (spatial mean \pm SD) intersecting shipping lanes inside the Santa Barbara Channel (Northern approach) versus outside (Western approach) in 2009 and 2015. Bars at bottom of plots display time ranges of blue whale sightings observed in the Southern California Bight in 2009 and 2015, respectively

performance than either single-model type. Nevertheless, concordance between the highest-ranked GAMMs and BRTs in modelled responses to environmental predictors lends confidence that each model was able to detect general patterns of whale habitat preferences.

4.2 | Blue whale habitat use

Previous studies have demonstrated the importance of SST, SSH and seafloor topography in blue whale habitat selection in the CCE (Becker et al., 2016; Hazen et al., 2017). Our study supports these findings and indicates that subsurface ocean dynamics also play an important role in habitat suitability for blue whales in this region. Isothermal layer depth (ILD) was retained as a significant predictor in the top ranking single models, and likely contributed to increased predictive performance as compared to a previous model using only remotely-sensed surface variables (Hazen et al., 2017). These results support a recent study demonstrating that subsurface ocean variables can improve descriptive power and predictive performance in SDMs for a number of other marine predator species, and help resolve species' responses to mesoscale activity apparent in the patchiness of prediction fields (Brodie et al., 2018). Blue whales' apparent preference for areas with shallower ILD values is also consistent with higher predicted blue whale densities in these areas (Becker et al., 2016), an association likely driven by increased prey availability. Indeed, May–September predictions of blue whale habitat suitability showed strong spatial consistency with known krill hotspots in the

SCB, Monterey Bay, and downstream of Cape Mendocino and Cape Blanco (Santora, Sydeman, Schroeder, Wells, & Field, 2011; Santora, Zeno, Dorman, & Sydeman, 2018). Thus, while our model did not include prey data, it was able to realistically identify blue whale foraging hotspots via its combination of physical proxies.

4.3 | Implications for dynamic management

Despite the dynamism of human activities and species affected by them, most boundaries used for ocean management, such as shipping lanes, are static. If dynamic spatial boundaries are unfeasible for management, the spatiotemporal patterns of overlap with anthropogenic threats should be assessed to understand where and when greatest risk occurs (Redfern et al., 2013; Rockwood et al., 2017). Specifically, information on spatiotemporal patterns of risk could be used to guide the timing of management actions, such as the implementation of slowdown rules, where spatial management boundaries are otherwise inflexible. Previous year-round models for the Eastern North Pacific blue whale population are valuable for long-term planning (Hazen et al., 2017), but moving to finer spatiotemporal resolution offers a better match with the timescales of oceanographic variability and human activities in the region. We found that predicted whale habitat under average environmental conditions overlapped with southern California shipping lanes primarily during June–October, with greater risk exposure shifting from the western to the northern lane later in the year (Figures 4 and 5). However, the anomalous warming of 2015 (Bond et al., 2015; Di Lorenzo & Mantua, 2016; Jacox et al., 2018, 2016) resulted in dramatic changes in the timing of overlap, with risk exposure increasing earlier in the year under anomalously warm conditions (Figure 5). These predictions were mirrored by the date ranges of observed blue whale sightings in those years (Figure 5, Figure S4).

Such results suggest that environmental and climatic conditions should be considered in management planning and that slowdown rules or alternate shipping lanes could be employed dynamically based on time-varying risk of ship strike. Dynamic slowdown areas based on high whale use have been shown to effectively reduce North Atlantic right whale mortalities from ship strikes, and 15-day temporary management areas were employed at short notice to protect unpredictable whale aggregations (Laist et al., 2014). However, these measures were only effective when slowdowns were mandatory. As slow-steaming or use of alternative routes can be costly for vessels, dynamic implementation of these management options has the potential to be more economical than static or even seasonal rules. Daily distributions of whale habitat suitability could be combined with vessel movement data derived from shipboard monitoring systems (e.g., AIS; Kroodsma et al., 2018) to refine strike risk and evaluate alternative management options. Future studies should also investigate the correspondence in whale sightings or observed strikes to particular thresholds in whale habitat suitability that can be used to trigger management interventions.

Finally, our study relied on fine-scale, gapless environmental data derived from a data-assimilative ocean model developed for our study region. This type of model output is becoming more commonly available regionally and similar products exist globally at coarser

resolutions; we encourage development, dissemination and uptake of output from these ocean models for applications like the one demonstrated here. In the absence of gapless data, analytical techniques such as Boosted Regression Trees have been successfully applied to deal with missing remotely sensed data, for example due to cloud cover, in a dynamic species distribution modelling context (Hazen et al., 2018; Welch et al., 2018). With the increase in ocean modelling or remote sensing technologies and computational power, there is greater opportunity to implement dynamic management approaches that are more responsive to changing environmental conditions, species' movements and patterns of human activity (Hazen et al., 2018; Maxwell et al., 2015). Such efforts thereby exemplify opportunities for cross-disciplinary collaboration. Dynamic, high-resolution species distribution models provide a valuable tool for assessing the spatio-temporal patterns of risk exposure to achieve management objectives.

ACKNOWLEDGEMENTS

We thank the Benioff Ocean Initiative for supporting this study. We thank the UCSC Ocean Modelling group for providing ROMS output. Support for blue whale satellite tagging and data acquisition includes the National Geographic Society, the Tagging of Pacific Pelagics program of the Census of Marine Life, the Alfred P. Sloan Foundation, the Moore Foundation, the Packard Foundation, the Office of Naval Research (grants No. 9610608, 0010085 and 0310862), NASA (grant No. NNX11AP71G), and private donors to Oregon State University's Marine Mammal Institute Endowment. We thank the many people at the Marine Mammal Institute who assisted with tag development and tagging operations, and Tomas Follett for data management. The National Marine Fisheries Service authorized this research under permit numbers 841 (1993–1998), 369–1440 (1999–2004) and 369–1757 (2005–2010) to Dr. Bruce Mate. Tagging in Mexican waters was conducted under permits issued by the Secretaria de Medio Ambiente y Recursos Naturales, Mexico (permit number DOO 028319 and SGPA/DGVS 0576). Whale tagging was approved by the Oregon State University Animal Care and Use Committee. We also thank the California Cooperative Oceanic Fisheries Investigations, Channel Islands National Marine Sanctuary, Channel Islands Naturalist Corps, NOAA National Marine Fisheries Service and Southwest Fisheries Science Center, Point Blue Conservation Science, Spotter Pro and Whale Alert for providing whale sightings data used for validation. In addition, we are grateful to Alison Thompson for assistance in compiling the sightings datasets, and to Jessica Morten, Sean Hastings, and the Channel Islands National Marine Sanctuary for providing spatial layers of shipping lanes as well as valuable feedback. Finally, we are grateful to Gemma Carroll and three anonymous referees for valuable comments that strengthened this manuscript.

DATA AVAILABILITY

All spatial predictions from the habitat suitability model for 2009, 2015 and 2016 and shipping lane layers used in this study are available for download as raster grids via RShiny: https://heatherwelch.shinyapps.io/benioff_app/. Sample data and code for model fitting and evaluation are available via GitHub: <https://github.com/briana-abrahms/DynamicEnsembleSDM>.

ch.shinyapps.io/benioff_app/. Sample data and code for model fitting and evaluation are available via GitHub: <https://github.com/briana-abrahms/DynamicEnsembleSDM>.

ORCID

Briana Abrahms  <https://orcid.org/0000-0003-1987-5045>

Ladd M. Irvine  <https://orcid.org/0000-0001-5135-3496>

Daniel M. Palacios  <https://orcid.org/0000-0001-7069-7913>

REFERENCES

- Abrahms, B., Hazen, E. L., Aikens, E. O., Savoca, M. S., Goldbogen, J. A., Bograd, S. J., ... Mate, B. R. (2019). Memory and resource tracking drive blue whale migrations. *Proceedings of the National Academy of Sciences of the United States of America*, 116, 5582–5587. <https://doi.org/10.1073/pnas.1819031116>
- Araújo, M. B., & New, M. (2007). Ensemble forecasting of species distributions. *Trends in Ecology & Evolution*, 22, 42–47. <https://doi.org/10.1016/j.tree.2006.09.010>
- Bailey, H., Mate, B. R., Palacios, D. M., Irvine, L., Bograd, S. J., & Costa, D. P. (2009). Behavioural estimation of blue whale movements in the Northeast Pacific from state-space model analysis of satellite tracks. *Endangered Species Research*, 10, 93–106. <https://doi.org/10.3354/esr00239>
- Ballance, L. T., Pitman, R. L., & Fiedler, P. C. (2006). Oceanographic influences on seabirds and cetaceans of the eastern tropical Pacific: A review. *Progress in Oceanography*, 69, 360–390.
- Barbet-Massin, M., Jiguet, F., Albert, C. H., & Thuiller, W. (2012). Selecting pseudo-absences for species distribution models: How, where and how many? *Methods in Ecology and Evolution*, 3, 327–338. <https://doi.org/10.1111/j.2041-210X.2011.00172.x>
- Becker, E., Forney, K., Fiedler, P., Barlow, J., Chivers, S., Edwards, C., ... Redfern, J. (2016). Moving towards dynamic ocean management: How well do modeled ocean products predict species distributions? *Remote Sensing*, 8, 149–226. <https://doi.org/10.3390/rs8020149>
- Becker, E. A., Forney, K. A., Redfern, J. V., Barlow, J., Jacox, M. G., Roberts, J. J., & Palacios, D. M. (2018). Predicting cetacean abundance and distribution in a changing climate. *Diversity and Distributions*, 43, 459–518.
- Bograd, S. J., Schroeder, I., Sarkar, N., Qiu, X., Sydeman, W. J., & Schwing, F. B. (2009). Phenology of coastal upwelling in the California Current. *Geophysical Research Letters*, 36, 235–245. <https://doi.org/10.1029/2008GL035933>
- Bond, N. A., Cronin, M. F., Freeland, H., & Mantua, N. (2015). Causes and impacts of the 2014 warm anomaly in the NE Pacific. *Geophysical Research Letters*, 42, 3414–3420. <https://doi.org/10.1002/2015GL063306>
- Brodie, S., Jacox, M. G., Bograd, S. J., Welch, H., Dewar, H., Scales, K. L., ... Hazen, E. L. (2018). Integrating dynamic subsurface habitat metrics into species distribution models. *Frontiers in Marine Science*, 5, 1175–1213. <https://doi.org/10.3389/fmars.2018.00219>
- Burtenshaw, J. C., Oleson, E. M., Hildebrand, J. A., McDonald, M. A., Andrew, R. K., Howe, B. M., & Mercer, J. A. (2004). Acoustic and satellite remote sensing of blue whale seasonality and habitat in the Northeast Pacific. *Deep Sea Research Part II: Topical Studies in Oceanography*, 51, 967–986. [https://doi.org/10.1016/S0967-0645\(04\)00095-5](https://doi.org/10.1016/S0967-0645(04)00095-5)
- Checkley, D. M., & Barth, J. A. (2009). Patterns and processes in the California Current System. *Progress in Oceanography*, 83, 49–64. <https://doi.org/10.1016/j.pocean.2009.07.028>
- Croll, D. A., Marinovic, B., Benson, S., Chavez, F. P., Black, N., Ternullo, R., & Tershy, B. R. (2005). From wind to whales: trophic links in a coastal upwelling system. *Marine Ecology Progress Series*, 289, 117–130.

- Derville, S., Torres, L. G., Iovan, C., & Garrigue, C. (2018). Finding the right fit: Comparative cetacean distribution models using multiple data sources and statistical approaches. *Diversity and Distributions*, 8, e63708–e63717. <https://doi.org/10.1111/ddi.12782>
- Di Lorenzo, E., & Mantua, N. (2016). Multi-year persistence of the 2014/15 North Pacific marine heatwave. *Nature Climate Change*, 6, 1042–1047. <https://doi.org/10.1038/nclimate3082>
- Di Lorenzo, E., Miller, A. J., Schneider, N., & McWilliams, J. C. (2005). The warming of the California current system: Dynamics and ecosystem implications. *Journal of Physical Oceanography*, 35, 336–362. <https://doi.org/10.1175/JPO-2690.1>
- Di Lorenzo, E., & Ohman, M. D. (2013). A double-integration hypothesis to explain ocean ecosystem response to climate forcing. *Proceedings of the National Academy of Sciences of the United States of America*, 110, 2496–2499. <https://doi.org/10.1073/pnas.1218022110>
- Dunn, D. C., Maxwell, S. M., Boustany, A. M., & Halpin, P. N. (2016). Dynamic ocean management increases the efficiency and efficacy of fisheries management. *Proceedings of the National Academy of Sciences of the United States of America*, 113, 668–673. <https://doi.org/10.1073/pnas.1513626113>
- Elith, J., Graham, C. H., Anderson, R. P., Dudik, M., Ferrier, S., Guisan, A., ... Zimmermann, N. E. (2006). Novel methods improve prediction of species' distributions from occurrence data. *Ecography*, 29, 129–151. <https://doi.org/10.1111/j.2006.0906-7590.04596.x>
- Elith, J., & Leathwick, J. R. (2009). Species distribution models: Ecological explanation and prediction across space and time. *Annual Review of Ecology, Evolution, and Systematics*, 40, 677–697. <https://doi.org/10.1146/annurev.ecolsys.110308.120159>
- Elith, J., Leathwick, J. R., & Hastie, T. (2008). A working guide to boosted regression trees. *Journal of Animal Ecology*, 77, 802–813. <https://doi.org/10.1111/j.1365-2656.2008.01390.x>
- Fiedler, P. C., Redfern, J. V., Forney, K. A., Palacios, D. M., Sheredy, C., Rasmussen, K., ... Ballance, L. T. (2018). Prediction of large whale distributions: A comparison of presence-absence and presence-only modeling techniques. *Frontiers in Marine Science*, 5, 1527. <https://doi.org/10.3389/fmars.2018.00419>
- Fithian, W., Elith, J., Hastie, T., & Keith, D. A. (2014). Bias correction in species distribution models: Pooling survey and collection data for multiple species. *Methods in Ecology and Evolution*, 6, 424–438. <https://doi.org/10.1111/2041-210X.12242>
- Foley, M. M., Halpern, B. S., Micheli, F., Armsby, M. H., Caldwell, M. R., Crain, C. M., ... Steneck, R. S. (2010). Guiding ecological principles for marine spatial planning. *Marine Policy*, 34, 955–966. <https://doi.org/10.1016/j.marpol.2010.02.001>
- Fossette, S., Abrahms, B., Hazen, E. L., Bograd, S. J., Zilliacus, K. M., Calambokidis, J., ... Croll, D. A. (2017). Resource partitioning facilitates coexistence in sympatric cetaceans in the California Current. *Ecology and Evolution*, 7, 9085–9097.
- Fourcade, Y., Besnard, A. G., & Secondi, J. (2017). Paintings predict the distribution of species, or the challenge of selecting environmental predictors and evaluation statistics. *Global Ecology and Biogeography*, 27, 245–256. <https://doi.org/10.1111/geb.12684>
- Gregg, E. J., Palacios, D. M., Thompson, A., & Chan, K. M. A. (2018). Why less complexity produces better forecasts: An independent data evaluation of kelp habitat models. *Ecography*, 43, 1223–1316.
- Gritti, E. S., Duputié, A., Massol, F., & Chuine, I. (2013). Estimating consensus and associated uncertainty between inherently different species distribution models. *Methods in Ecology and Evolution*, 4, 442–452. <https://doi.org/10.1111/2041-210X.12032>
- Hanley, J. A., & McNeil, B. J. (1982). The meaning and use of the area under a receiver operating characteristic (ROC) curve. *Radiology*, 143, 29–36. <https://doi.org/10.1148/radiology.143.1.7063747>
- Hazen, E. L., Palacios, D. M., Forney, K. A., Howell, E. A., Becker, E., Hoover, A. L., ... Bailey, H. (2017). WhaleWatch: A dynamic management tool for predicting blue whale density in the California Current. *Journal of Applied Ecology*, 54, 1415–1428. <https://doi.org/10.1111/1365-2664.12820>
- Hazen, E. L., Scales, K. L., Maxwell, S. M., Briscoe, D. K., Welch, H., Bograd, S. J., ... Lewison, R. L. (2018). A dynamic ocean management tool to reduce bycatch and support sustainable fisheries. *Science Advances*, 4, eaar3001. <https://doi.org/10.1126/sciadv.aar3001>
- Howell, E. A., Kobayashi, D. R., Parker, D. M., Balazs, G. H., & Polovina, A. (2008). TurtleWatch: A tool to aid in the bycatch reduction of loggerhead turtles *Caretta caretta* in the Hawaii-based pelagic long-line fishery. *Endangered Species Research*, 5, 267–278. <https://doi.org/10.3354/esr00096>
- Irvine, L. M., Mate, B. R., Winsor, M. H., Palacios, D. M., Bograd, S. J., Costa, D. P., & Bailey, H. (2014). Spatial and temporal occurrence of blue whales off the U.S. West Coast, with implications for management. *PLoS ONE*, 9, e102959–e103010.
- Jacox, M. G., Alexander, M. A., Mantua, N. J., Scott, J. D., Hervieux, G., Webb, R. S., & Werner, F. E. (2018). Forcing of multiyear extreme ocean temperatures that impacted California current living marine resources in 2016. *Bulletin of the American Meteorological Society*, 99, S27–S33. <https://doi.org/10.1175/BAMS-D-17-0119.1>
- Jacox, M. G., Hazen, E. L., Zaba, K. D., Rudnick, D. L., Edwards, C. A., Moore, A. M., & Bograd, S. J. (2016). Impacts of the 2015–2016 El Niño on the California Current System: Early assessment and comparison to past events. *Geophysical Research Letters*, 43, 7072–7080. <https://doi.org/10.1002/2016GL069716>
- Jones, M. C., & Cheung, W. W. L. (2014). Multi-model ensemble projections of climate change effects on global marine biodiversity. *ICES Journal of Marine Science*, 72, 741–752. <https://doi.org/10.1093/icesjms/fsu172>
- Jonsen, I. D., Flemming, J. M., & Myers, R. A. (2005). Robust state-space modeling of animal movement data. *Ecology*, 86, 2874–2880. <https://doi.org/10.1890/04-1852>
- Kareiva, P. M., & Shigesada, N. (1983). Analyzing insect movement as a correlated random walk. *Oecologia*, 56, 234–238. <https://doi.org/10.1007/BF00379695>
- Kavanaugh, M. T., Oliver, M. J., Chavez, F. P., Letelier, R. M., Muller-Karger, F. E., & Doney, S. C. (2016). Seascapes as a new vernacular for pelagic ocean monitoring, management and conservation. *ICES Journal of Marine Science*, 73, 1839–1850. <https://doi.org/10.1093/icesjms/fsw086>
- Kroodsmas, D. A., Mayorga, J., Hochberg, T., Miller, N. A., Boerder, K., Ferretti, F., ... Worm, B. (2018). Tracking the global footprint of fisheries. *Science*, 359, 904–908. <https://doi.org/10.1126/science.aao5646>
- Laist, D. W., Knowlton, A. R., & Pendleton, D. (2014). Effectiveness of mandatory vessel speed limits for protecting North Atlantic right whales. *Endangered Species Research*, 23, 133–147. <https://doi.org/10.3354/esr00586>
- Lewison, R., Hobday, A. J., Maxwell, S., Hazen, E., Hartog, J. R., Dunn, D. C., ... Crowder, L. B. (2015). Dynamic ocean management: Identifying the critical ingredients of dynamic approaches to ocean resource management. *BioScience*, 65, 486–498. <https://doi.org/10.1093/biosci/biv018>
- Mannocci, L., Boustany, A. M., Roberts, J. J., Palacios, D. M., Dunn, D. C., Halpin, P. N., ... Winship, A. J. (2017). Temporal resolutions in species distribution models of highly mobile marine animals: Recommendations for ecologists and managers. *Diversity and Distributions*, 23, 1098–1109. <https://doi.org/10.1111/ddi.12609>
- Marmion, M., Parviainen, M., Luoto, M., Heikkinen, R. K., & Thuiller, W. (2009). Evaluation of consensus methods in predictive species distribution modelling. *Diversity and Distributions*, 15, 59–69. <https://doi.org/10.1111/j.1472-4642.2008.00491.x>
- Mate, B. R., Lagerquist, B. A., & Calambokidis, J. (1999). Movements of North Pacific blue whales during the feeding season off southern California and their southern fall migration. *Marine Mammal Science*, 15, 1246–1257.

- Maxwell, S. M., Hazen, E. L., Lewison, R. L., Dunn, D. C., Bailey, H., Bograd, S. J., ... Crowder, L. B. (2015). Dynamic ocean management: Defining and conceptualizing real-time management of the ocean. *Marine Policy*, 58, 42–50. <https://doi.org/10.1016/j.marpol.2015.03.014>
- Monnahan, C. C., Branch, T. A., & Punt, A. E. (2014). Do ship strikes threaten the recovery of endangered eastern North Pacific blue whales? *Marine Mammal Science*, 31, 279–297. <https://doi.org/10.1111/mms.12157>
- Moore, A. M., Edwards, C. A., Fiechter, J., Drake, P., Arango, H., Neveu, E., & Weaver, A. (2013). A 4D-Var analysis system for the California current: A prototype for an operational regional ocean data assimilation system. In S. K. Park & L. Xu (Eds.), *Data assimilation for atmospheric, oceanic and hydrological applications* (pp. 345–366). Berlin, Heidelberg: Springer.
- Neveu, E., Moore, A. M., Edwards, C. A., Fiechter, J. R. M., Drake, P., Crawford, W. J., ... Nuss, E. (2016). An historical analysis of the California Current circulation using ROMS 4D-Var: System configuration and diagnostics. *Ocean Modelling*, 99, 1–19. <https://doi.org/10.1016/j.ocemod.2015.11.012>
- Oppel, S., Meirinho, A., Ramirez, I., Gardner, B., O'Connell, A. F., Miller, P. I., & Louzao, M. (2012). Comparison of five modelling techniques to predict the spatial distribution and abundance of seabirds. *Biological Conservation*, 156, 94–104. <https://doi.org/10.1016/j.biocon.2011.11.013>
- Qiao, H., Soberón, J., & Peterson, A. T. (2015). No silver bullets in correlative ecological niche modelling: Insights from testing among many potential algorithms for niche estimation. *Methods in Ecology and Evolution*, 6, 1126–1136. <https://doi.org/10.1111/2041-210X.12397>
- R Core Team (2017). *R: A language and environment for statistical computing*. Vienna, Austria: R Foundation for Statistical Computing.
- Redfern, J. V., McKenna, M. F., Moore, T. J., Calambokidis, J., Deangelis, M. L., Becker, E. A., ... Chivers, S. J. (2013). Assessing the risk of ships striking large whales in marine spatial planning. *Conservation Biology: the Journal of the Society for Conservation Biology*, 27, 292–302. <https://doi.org/10.1111/cobi.12029>
- Reilly, S. B., Bannister, J. L., Best, P. B., Brown, M., Brownell, Jr, R. L., Butterworth, D. S., ... Zerbini, A. N. (2008). *Balaenoptera musculus*. The IUCN Red List of Threatened Species. <http://www.iucnredlist.org/details/2477/0>. Accessed 1 October 2018.
- Robinson, N. M., Nelson, W. A., Costello, M. J., Sutherland, J. E., & Lundquist, C. J. (2017). A systematic review of marine-based Species Distribution Models (SDMs) with recommendations for best practice. *Frontiers in Marine Science*, 4, 110–111. <https://doi.org/10.3389/fmars.2017.00421>
- Rockwood, R. C., Calambokidis, J., & Jahncke, J. (2017). High mortality of blue, humpback and fin whales from modeling of vessel collisions on the U.S. West Coast suggests population impacts and insufficient protection. *PLoS ONE*, 12, e0183052–e183124.
- Santora, J. A., Sydeman, W. J., Schroeder, I. D., Wells, B. K., & Field, J. C. (2011). Mesoscale structure and oceanographic determinants of krill hotspots in the California Current: Implications for trophic transfer and conservation. *Progress in Oceanography*, 91, 397–409. <https://doi.org/10.1016/j.pocean.2011.04.002>
- Santora, J. A., Zeno, R., Dorman, J. G., & Sydeman, W. J. (2018). Submarine canyons represent an essential habitat network for krill hotspots in a Large Marine Ecosystem. *Scientific Reports*, 8, 7579. <https://doi.org/10.1038/s41598-018-25742-9>
- Scales, K. L., Hazen, E. L., Jacox, M. G., Edwards, C. A., Boustany, A. M., Oliver, M. J., & Bograd, S. J. (2016). Scales of inference: On the sensitivity of habitat models for wide-ranging marine predators to the resolution of environmental data. *Ecography*, 39, 1–11.
- Scales, K. L., Miller, P. I., Ingram, S. N., Hazen, E. L., Bograd, S. J., & Phillips, R. A. (2015). Identifying predictable foraging habitats for a wide-ranging marine predator using ensemble ecological niche models. *Diversity and Distributions*, 22, 212–224. <https://doi.org/10.1111/ddi.12389>
- Širovic, A., Rice, A., Chou, E., Hildebrand, J. A., Wiggins, S. M., & Roch, M. A. (2015). Seven years of blue and fin whale call abundance in the Southern California Bight. *Endangered Species Research*, 28, 61–76. <https://doi.org/10.3354/esr00676>
- Welch, H., Hazen, E. L., Bograd, S. J., Jacox, M. G., Brodie, S., Robinson, D., ... Lewison, R. (2018). Practical considerations for operationalizing dynamic management tools. *Journal of Applied Ecology*, 21, 7–11.
- White, C., Halpern, B. S., & Kappel, C. V. (2012). Ecosystem service tradeoff analysis reveals the value of marine spatial planning for multiple ocean uses. *Proceedings of the National Academy of Sciences of the United States of America*, 109, 4696–4701. <https://doi.org/10.1073/pnas.1114215109>
- Willis-Norton, E., Hazen, E. L., Fossette, S., Shillinger, G., Rykaczewski, R. R., Foley, D. G., ... Bograd, S. J. (2015). Climate change impacts on leatherback turtle pelagic habitat in the Southeast Pacific. *Deep-Sea Research Part II*, 113, 260–267. <https://doi.org/10.1016/j.dsr2.2013.12.019>
- Wood, S. N. (2017). *Generalized Additive Models: An Introduction with R* (2nd ed.). Boca Raton, FL: Chapman and Hall/CRC.
- Yamamoto, T., Watanuki, Y., Hazen, E. L., Nishizawa, B., Sasaki, H., & Takahashi, A. (2015). Statistical integration of tracking and vessel survey data to incorporate life history differences in habitat models. *Ecological Applications: A Publication of the Ecological Society of America*, 25, 2394–2406. <https://doi.org/10.1890/15-0142.1>
- Zydelis, R., Lewison, R. L., Shaffer, S. A., Moore, J. E., Boustany, A. M., Roberts, J. J., ... Crowder, L. B. (2011). Dynamic habitat models: Using telemetry data to project fisheries bycatch. *Proceedings Biological Sciences/the Royal Society*, 278, 3191–3200. <https://doi.org/10.1098/rspb.2011.0330>

BIOSKETCH

Author contributions: B.A., E.L.H., M.G.J., S.J.B., H.W., S.B. and E.A.B. contributed to project design and development. M.G.J., L.M.I., D.M.P. and B.R.M. contributed data. B.A. performed analyses and wrote the initial manuscript draft with contributions from all authors.

AUTHOR BIOGRAPHY

Dr. **Briana Abrahms** is a wildlife ecologist with broad interests in spatial and movement ecology, global change biology and conservation biology. The team of authors includes ecologists, oceanographers and modelers interested in linking animal movement and distributions to biophysical processes.

SUPPORTING INFORMATION

Additional supporting information may be found online in the Supporting Information section at the end of the article.

How to cite this article: Abrahms B, Welch H, Brodie S, et al. Dynamic ensemble models to predict distributions and anthropogenic risk exposure for highly mobile species. *Divers Distrib*. 2019;25:1182–1193. <https://doi.org/10.1111/ddi.12940>